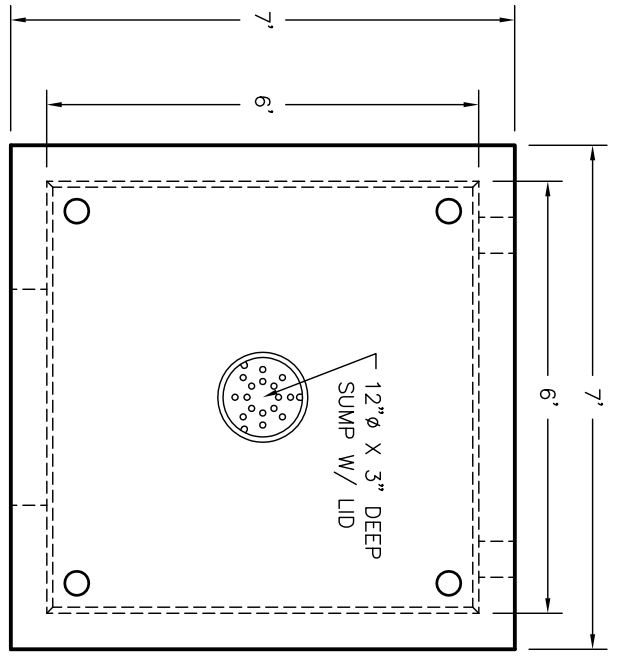
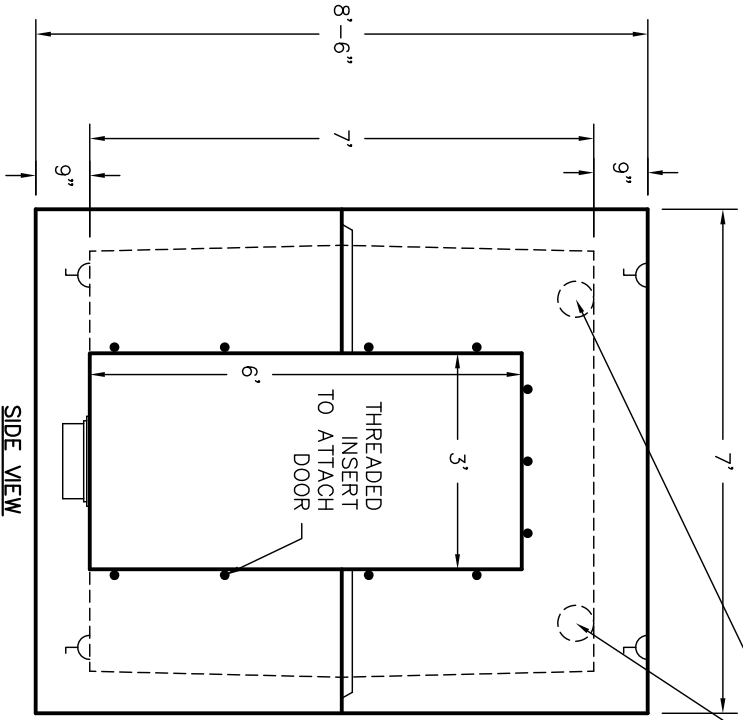


**6' X 6' X 7'
STORM SHELTER**
APPROX. WEIGHT = 24,800 LBS

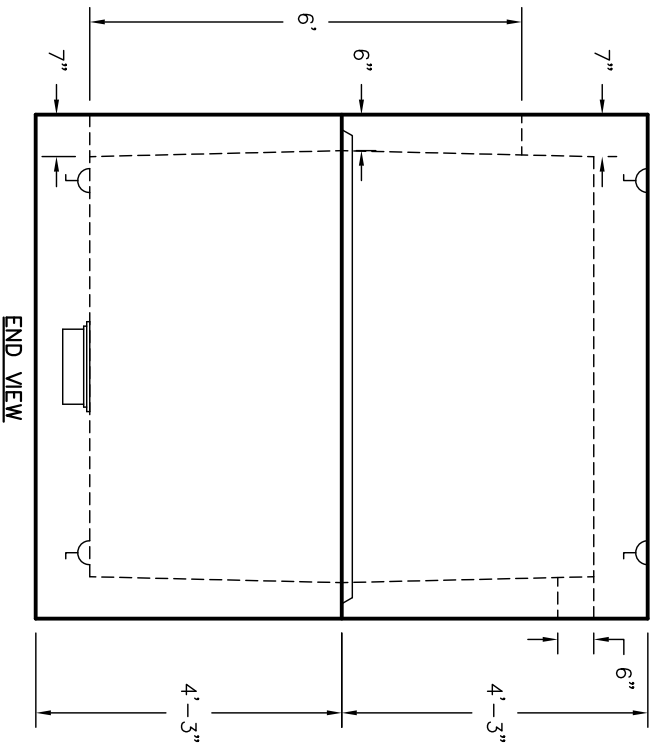


TOP VIEW

6" CONDUIT
COUPLERS FOR VENTS



SIDE VIEW



END VIEW

PRE POUR
POST POUR

6' X 6' X 7'
STORM SHELTER

1 OF 1

SHEET NO.

WIESER CONCRETE

W3716 US HWY10. MAIDEN ROCK, WI 54750

800-325-8456

SCALE: 3/8" = 1'
DRAWN BY: SWT
DATE: 5/25/11
FILE: custom boxes - utility manholes\6' x 6' x 7' storm shelter

REV NO.	DATE: