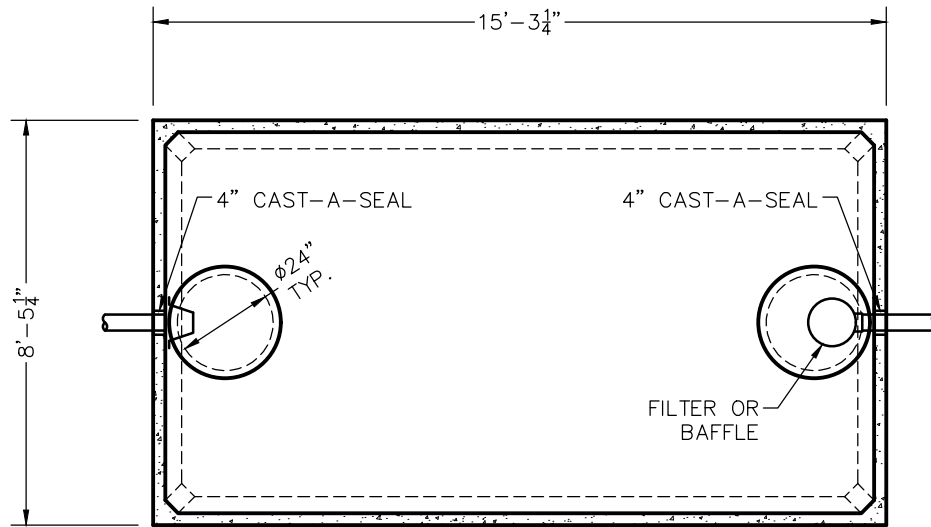
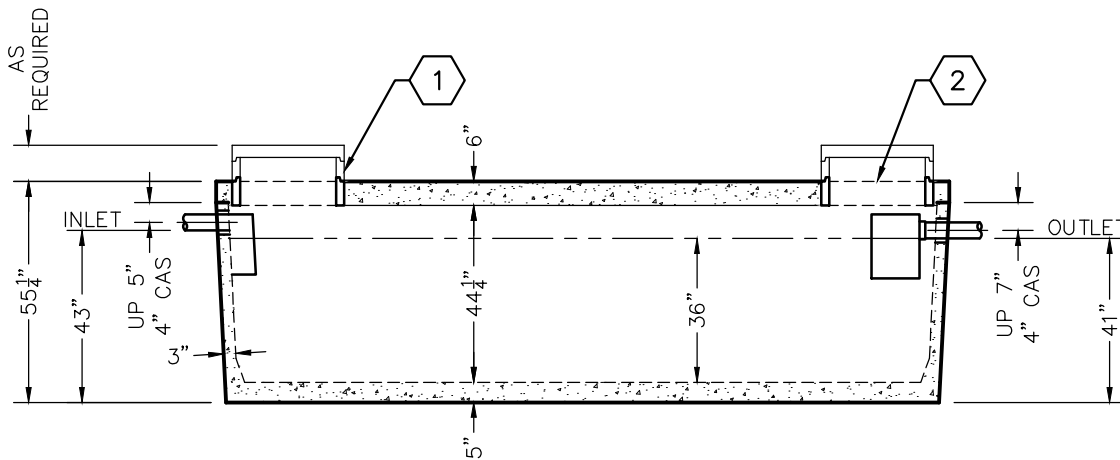


# WLP2500 TANK SPECIFICATIONS



TOP VIEW



SIDE VIEW

**DIMENSIONS:**

- WALL: 3"
- BOTTOM: 5"
- COVER: 6"
- MANHOLE: 24" I.D. PRECAST CONCRETE RISER
- HEIGHT: 55 1/4"
- LENGTH: 15'-3 1/4"
- WIDTH: 8'-5 1/4"
- BELOW INLET: 43"
- LIQUID LEVEL: 36"
- WEIGHT: BOTTOM 15,527 LBS.  
COVER 9,300 LBS.

**INLET AND OUTLET:**

4" CAST-A-SEAL BOOT OR EQUAL GASKET

**INLET AND OUTLET BAFFLE AND FILTER:**

WISCONSIN, SEE DETAIL #10  
(OTHER STATES SEE CHART)

LIQUID CAPACITY: 69.44 GAL/IN

**HOLDING TANK:**

OUTLET HOLE PLUGGED  
ACTUAL CAPACITY: 2,639 GALLONS

LOADING DESIGN: 8'-0" UNSATURATED SOIL

**TANK CAN BE USED AS:**

SEPTIC / HOLDING / PUMP OR SIPHON

COVER: MIX DESIGN #8 (NO FIBER)

TANK: MIX DESIGN #9 (SMALL FIBER)

**CUSTOMIZED TANKS:**

FOR CUSTOM TANKS CONTACT WIESER CONCRETE

**KEY NOTES:**

- 1 CONCRETE OR EZ-SNAP RISERS
- 2 (2 EA.) MANHOLE EACH END OR  
(1 EA.) MANHOLE & (1 EA.) 4" COUPLER  
OPPOSITE ENDS

REVIEWED BY \_\_\_\_\_  
REVIEW DATE \_\_\_\_\_

**DRAWINGS SUBMITTED  
FOR APPROVAL**

APPROVED BY: \_\_\_\_\_  
APPROVAL DATE: \_\_\_\_\_  
PRODUCTS NEEDED BY: \_\_\_\_\_

TANKS ARE MANUFACTURED TO MEET OR EXCEED ASTM C-1227 REQUIREMENTS

PRE-POUR:		POST-POUR:	
DATE:		REV.	
SCALE: 1/4" = 1'-0"	DRAWN BY: WCP	DATE: 00/00/00	FILE: wlp2500
<b>WIESER CONCRETE</b>			
W3716 US HWY 10, MAIDEN ROCK, WI 54750 800-325-8456			
WLP2500	SEPTIC MANUAL		
SHEET NO. 1 OF 1			